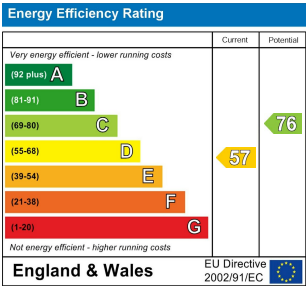
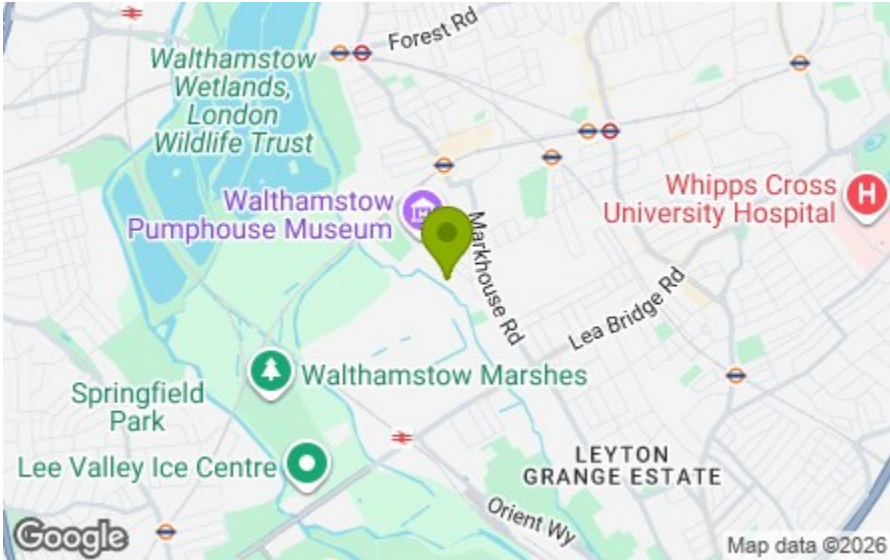




Total Area: 49.1 m<sup>2</sup> ... 529 ft<sup>2</sup>  
All measurements are approximate and for display purposes only.

Hallway  
Reception  
15'11" x 11'4"  
Kitchen  
8'5" x 8'5"  
Bedroom  
12'5" x 9'0"  
Bedroom  
8'10" x 6'10"  
Bathroom  
6'9" x 5'5"  
Shared Garden  
29'6"



## LUTHER KING CLOSE, WALTHAMSTOW

£1,650 Per Calendar Month  
2 Bed Apartment - Purpose Built



### Features:

- Unfurnished
- Ground Floor Flat
- Large Shared Garden
- Off Street Parking Available
- Spacious Reception
- Contemporary Fitted Kitchen
- Double & Single Bedroom
- Three Piece Bathroom
- Wood Flooring Throughout

A smartly appointed, elegantly finished two bedroom apartment on the ground floor of a modest, three storey contemporary development set amongst pleasant grounds just off our exciting new neighbourhood of St James Street, with a fine range of independent restaurants and superb transport links to the city.

**E11, E7, E12 & E15**  
hello11@stowbrothers.com  
0203 397 2222

**E4 & N17**  
hello4@stowbrothers.com  
0203 369 6444

**E17 & E10**  
hello17@stowbrothers.com  
0203 397 9797

**E18 & IG8**  
hello18@stowbrothers.com  
0203 369 1818

**E8, E9, E5, N16, E3 & E2**  
hellohackney@stowbrothers.com  
0208 520 3077

**New Homes**  
newhomes@stowbrothers.com  
0203 325 7227

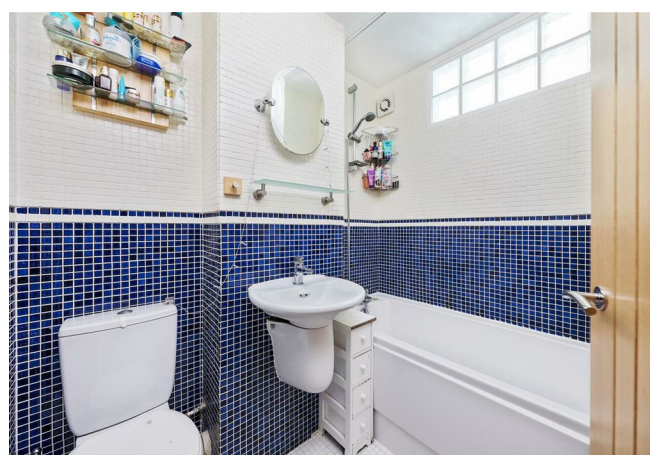
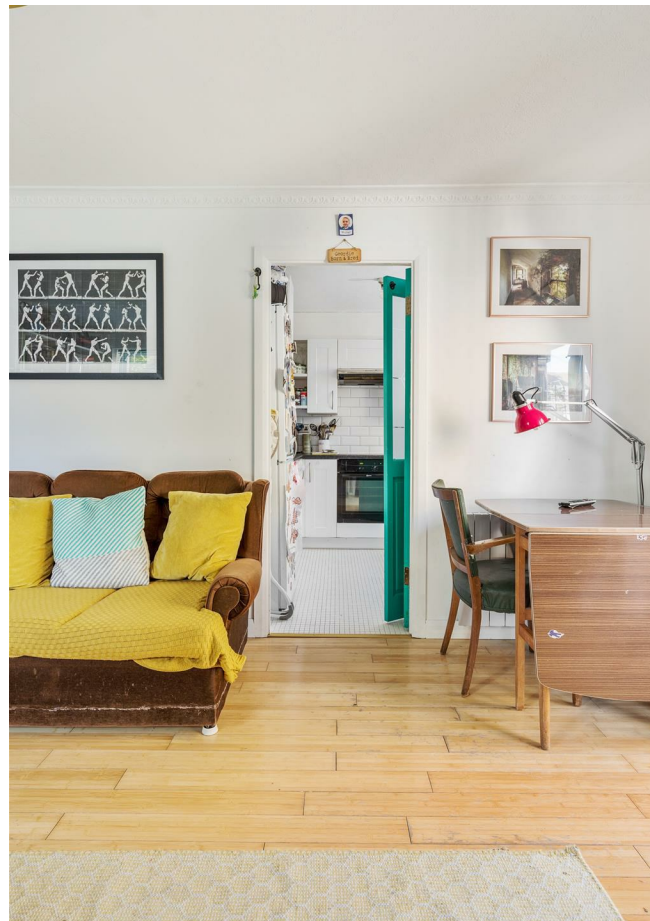
**Investment & Development**  
id@stowbrothers.com  
0208 520 6220

**Property Maintenance**  
propertymanagement@stowbrothers.com  
0203 325 7228

**STOWBROTHERS.COM**  
@STOWBROTHERS

REQUEST A VIEWING  
0203 397 9797





## IF YOU LIVED HERE...

You'll be enjoying a bright and elegant suite of rooms, with hard wood flooring running underfoot throughout, pristine white walls and plenty of natural light. Your reception comes in at a generous 180 square feet with a French doors leading you out onto the rarely used and tranquil communal garden. Your kitchen next door is fully decked out with a suite of white shaker style cabinets, slate effect countertops and leafy views from the window.

Elsewhere, your master bedroom is a substantial double coming in just over 110 square feet, equally resplendent with those glossy dark wood floors and bright walls. Next door

bedroom two is a generous single ideal for a child, home office or dressing room. Both your bedrooms are soundproofed. Finally, your bathroom's elegantly finished with a shower over the bathtub and tiled throughout.

Outside and you're surrounded by open green spaces – St James Park, Low Hall Sports Ground and the Low Hall Nature Reserve are right around the corner. Venture further afield and the vast blue and green space of the 500 acre Walthamstow Wetlands (London's largest nature reserve) is just five minutes by bike or a little under a mile on foot. It's all well worth the stroll; you'll forget you're in London.



## WHAT ELSE?

- St James Street station, and its direct twenty minute overground runs to Liverpool Street, is just a half mile on foot.
- You have one of Walthamstow's most characterful wining and dining establishments right around the corner. Supperclub.tube is based in the basement of the Walthamstow Pumphouse Museum. Here you can enjoy lovingly crafted south American cuisine in the unique environment of a 1967 Victoria line tube carriage.
- You'll find more gastronomical options at CRATE St James, a collection of cafes, burger joints and breweries just your side of St James Street station. There're also yoga studios, hairdressers and more.

REQUEST A VIEWING  
0203 397 9797

FOLLOW US ➡ @STOWBROTHERS  
STOWBROTHERS.COM